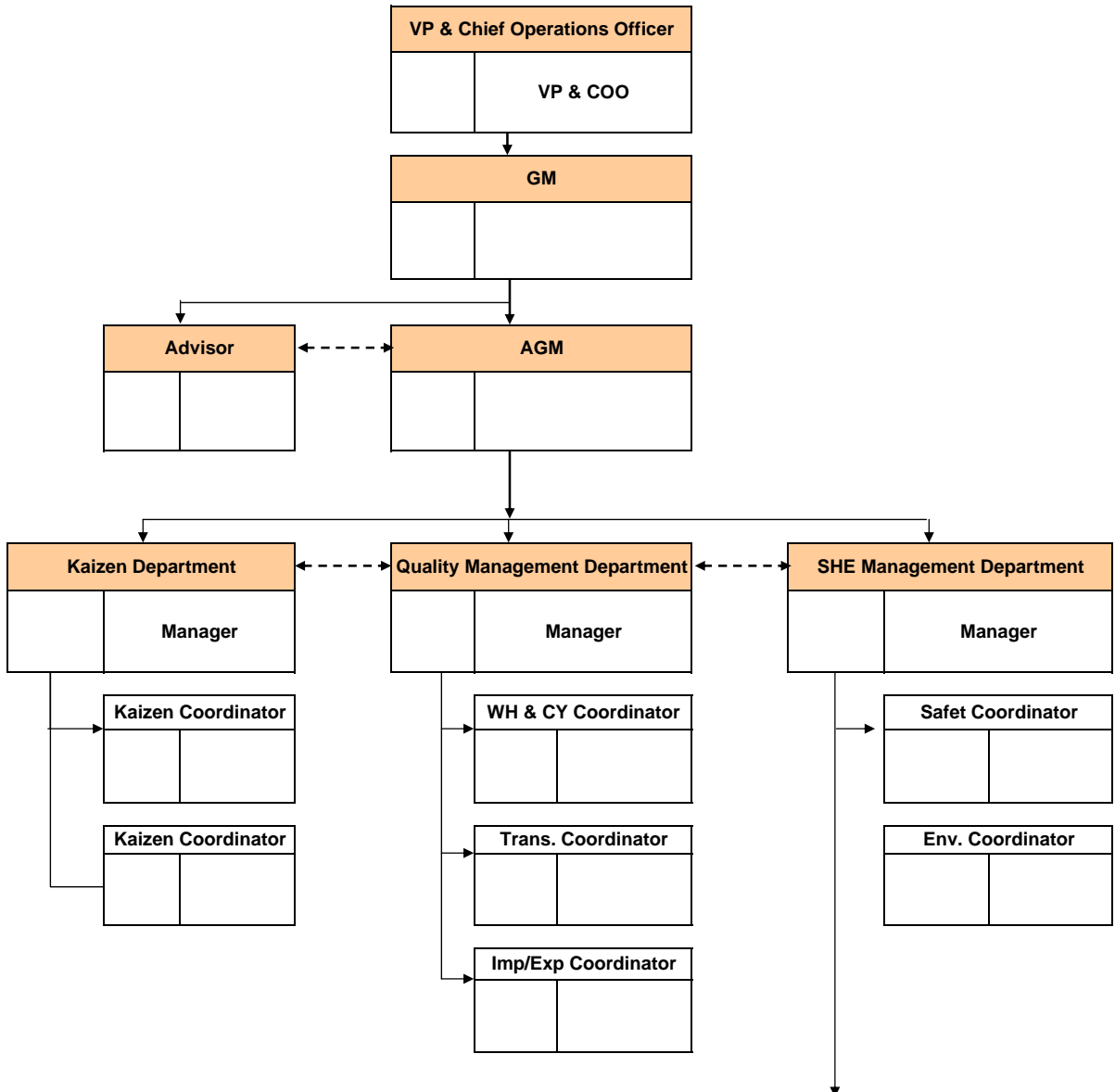


Quality & Safety Management Division



Safety Officers who are working at site operations											
Sites	LLC1	LLC2	NTTK	NTTR	NESC	EPZ	SATL	BL	NSLC	MTP	HO
Safety Officers											

[Job Scope] Kaizen Coordinator Team	[Job Scope] Quality & SHE Management Team	[Job Scope] Admins Support Unit
1) Kaizen target items improvement 2) Kaizen Audit management 3) Kaizen Award / Activities management 4) RHQ/GHQ reporting	1) Common rules & practices of Quality & SHE set up & apply 2) Quality & SHE audit activities management 3) Accident management 4) Safety analysis management 5) RHQ/GHQ reporting 6) KPI management	1) Support for monthly consolidate reports of QSG and GHQ/RHQ 2) Support activities of Quality & Safety management teams 3) Other special project support as time to time request